

CADMANAGERTOOLS.COM



# *Linetype Library Manager*

## *1.0*

---

*Tool to manage Linetype library for AutoCAD  
and Verticals*

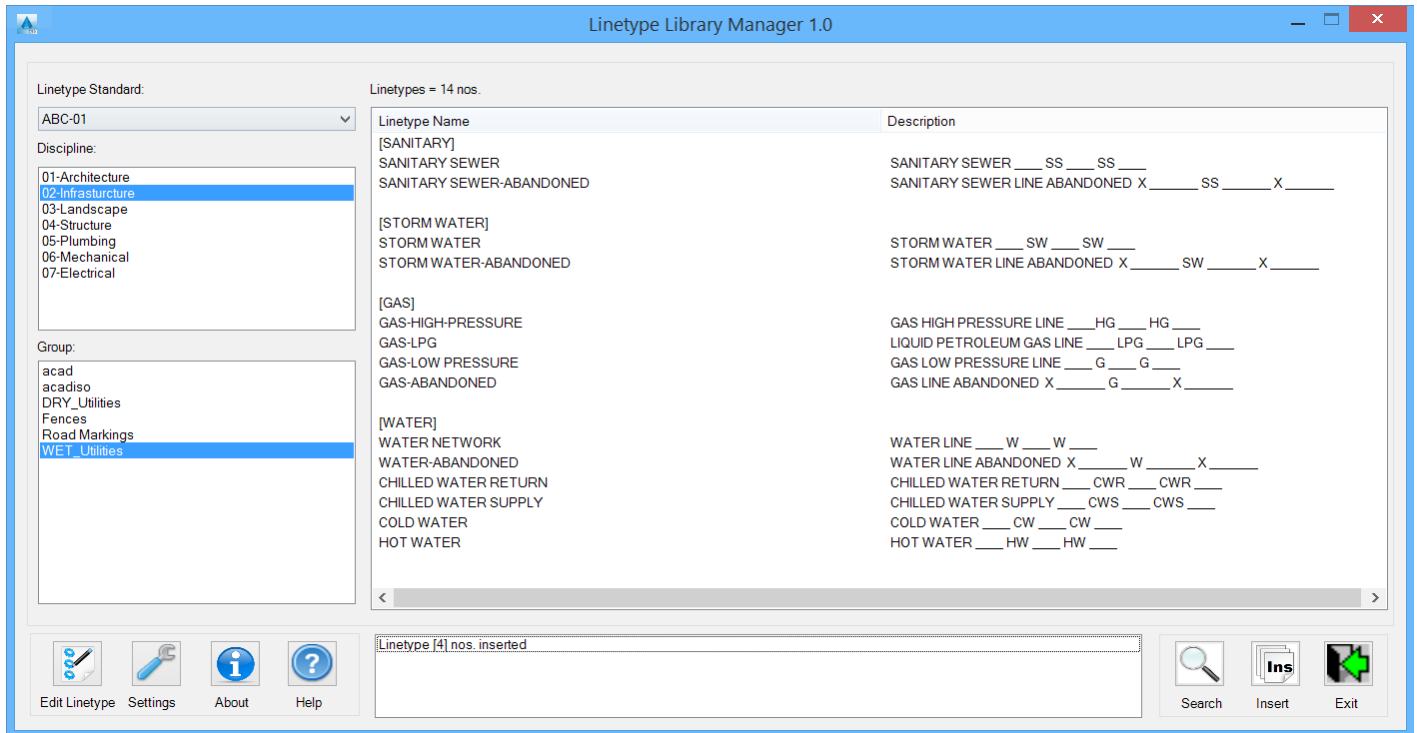
**Compatible with AutoCAD 2013 to 2018**



## Introduction:

The LinetypeLibraryManager is a powerful, easy to use tool to manage Linetype library for AutoCAD. It comes from years of experience in AutoCAD and it is one of the AutoCAD management tools developed by CADManagerTools.

It is compatible with 32-bit and 64-bit AutoCAD and Vertical versions from 2013 to 2018.



## Installation:

The installer that ran when you downloaded this plug-in from Autodesk Exchange has already installed the plug-in. You may need to restart AutoCAD to activate the plug-in. The command for command line is "CMT\_LTM".

For the first time set the Linetype library location in the settings dialog box and click save to register the path and close the Linetype Library Manager and re-launch Linetype Library Manager, select the Linetype standard from available names in the drop down list and select the discipline folder name and select the linetype file available in the group collection that lists all available Linetypes in the selected file.

## Setting up Linetype library directory structure:

With little effort user can setup the directory structure which suites his/her company wide requirements, the sample is given below to arrange the linetype library in folders.

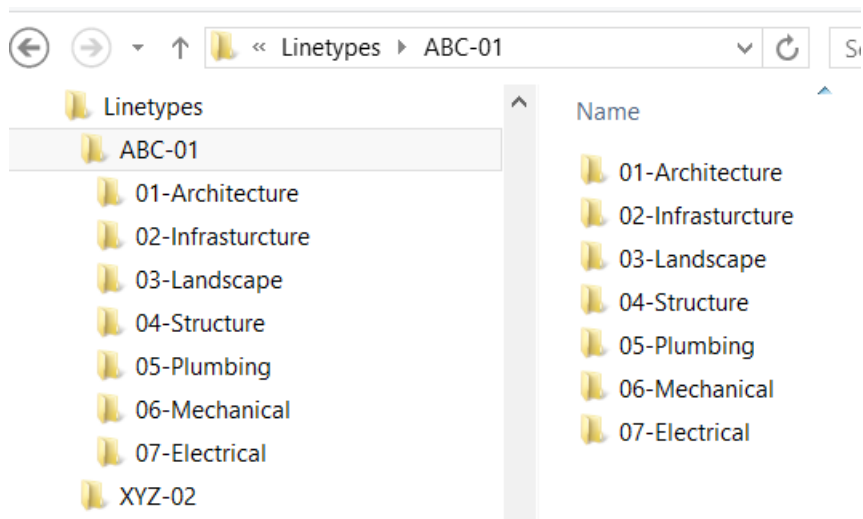
The main linetype library manager folder structure should be organized as below image

Arrange your linetype library based on client specific Layer standards, in most cases the linetype names/ styles for various features differ from client to client.





Name the Main linetype library folder of your choice; for example “LINETYPES” or “LINETYPE LIBRARY” etc...

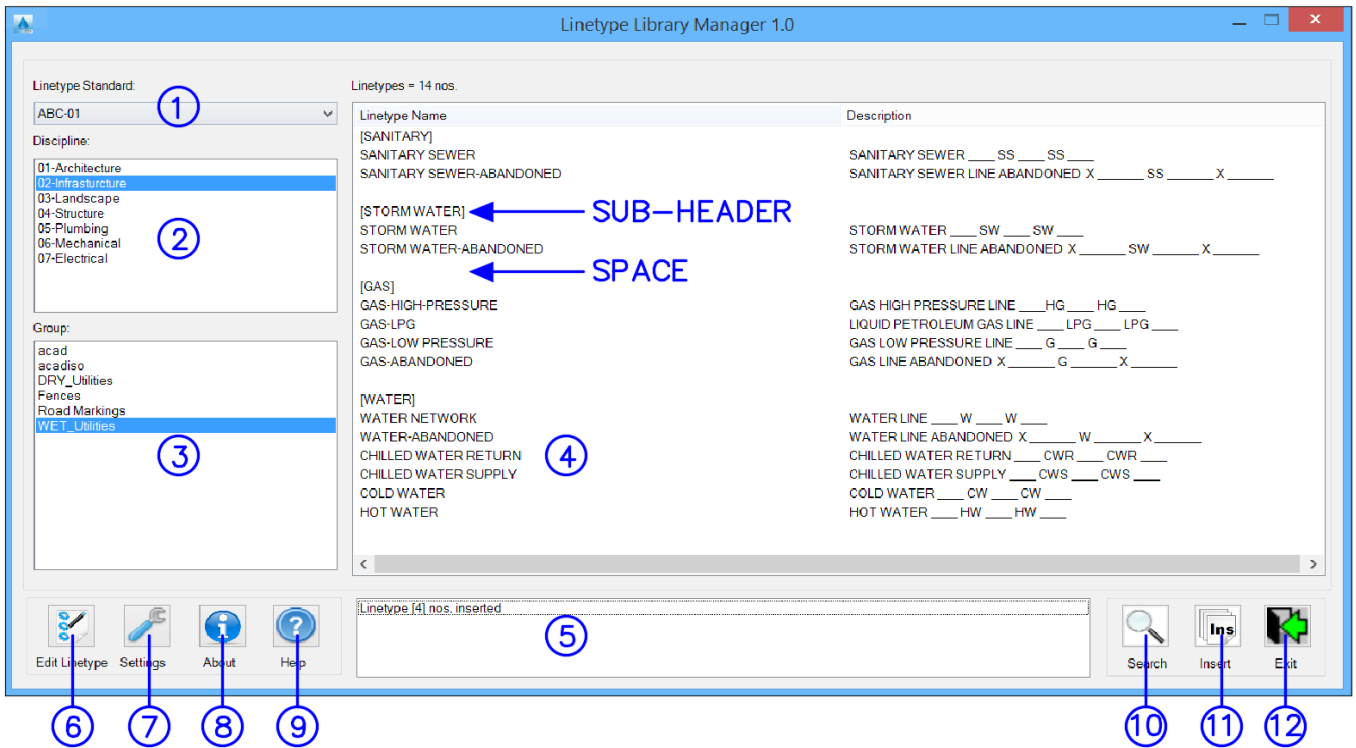


1. Create Client specific linetype folders under main folder.
2. Create Discipline wise folders under the client specific linetype standards folder.
3. Arrange linetype files within each discipline folder.





User Interface Controls:



Linetype Standard : Lists linetype standard list

1. Discipline list : Lists discipline list

2. Group list : Lists linetype group file

3. Linetype list : Lists linetype information from the selected linetype file

4. Report log : Reports the status of linetype insert operation

5. Edit linetype file : Opens the selected linetype file for editing in “Notepad” application

6. Settings : Opens settings dialog

7. About : Opens About dialog

8. Help : Opens help file

9. Search : Opens search dialog

10. Insert : Insert selected linetypes; Single linetype can be inserted by double click on the linetype name

11. Exit : Exit the application





### Creating linetype file:

```

WET_Uilities.lin - Notepad
File Edit Format View Help
[SANITARY]
*SANITARY SEWER, SANITARY SEWER ____ SS ____ SS ____
A,4,-0.25,["SS",STANDARD,S=0.5,R=0.0,U=0,X=-.05,Y=-0.25],-1
*SANITARY SEWER-ABANDONED, SANITARY SEWER LINE ABANDONED X ____ SS ____ X ____
A,4,["X",STANDARD,S=0.5,R=0,X=-.05,Y=-.25],-.25,4,-.25,
["SS",STANDARD,S=.5,R=0,U=0,X=-.05,Y=-.25],-1

[STORM WATER]
*STORM WATER, STORM WATER ____ SW ____ SW ____
A,4,-0.25,["SW",STANDARD,S=0.5,R=0.0,U=0,X=-.05,Y=-0.25],-1
*STORM WATER-ABANDONED, STORM WATER LINE ABANDONED X ____ SW ____ X ____
A,4,["X",STANDARD,S=0.5,R=0,X=-.05,Y=-.25],-.25,4,-.25,
["SW",STANDARD,S=.5,R=0,U=0,X=-.05,Y=-.25],-1

[GAS]
;;GAS NETWORK
*GAS-HIGH-PRESSURE, GAS HIGH PRESSURE LINE ____ HG ____ HG ____

```

There is no special formatting is required; User can simply follow the AutoCAD default linetype file formatting

Divider for linetype can be added within open and closing square braces

Example: [**STORM WATER**]

In addition to the square braces ([]) blank lines, Hyphen (-), and Underscore (\_) are allowed to subdivide the linetype list, refer to linetype files installed in the installation folder.

semicolon (;) is treated as comment and will not be loaded to Linetype list

Example: ;; The below linetypes are newly added for project #####-###

```

Linetype Name
[SANITARY]
SANITARY SEWER
SANITARY SEWER-ABANDONED

[STORM WATER] ← DIVIDOR
STORM WATER
STORM WATER-ABANDONED ← SPACE

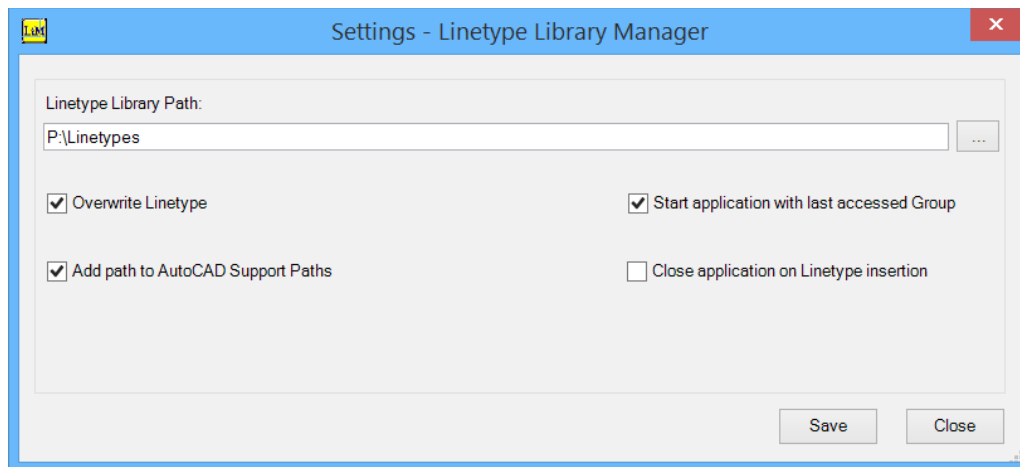
[GAS]
GAS-HIGH-PRESSURE
GAS-LPG
GAS-LOW PRESSURE
GAS-ABANDONED

```





## Settings:



### Linetype Library Path:

Set up the linetype library directory structure and set the linetype library manager start up location, this process is the one time set up.

### Overwrite Linetype:

Enable this option to overwrite the existing linetype in the current drawing with selected linetype.

### Start application with last accessed group:

Enable this option to start the application with last used linetype group, if unchecked the application will start with first item selected from the Linetype standard, Discipline and group folders.

### Close application on linetype insertion:

Enable this options to close the linetype library manager application on the completion of the linetype insertion.

### Add path to AutoCAD support paths:

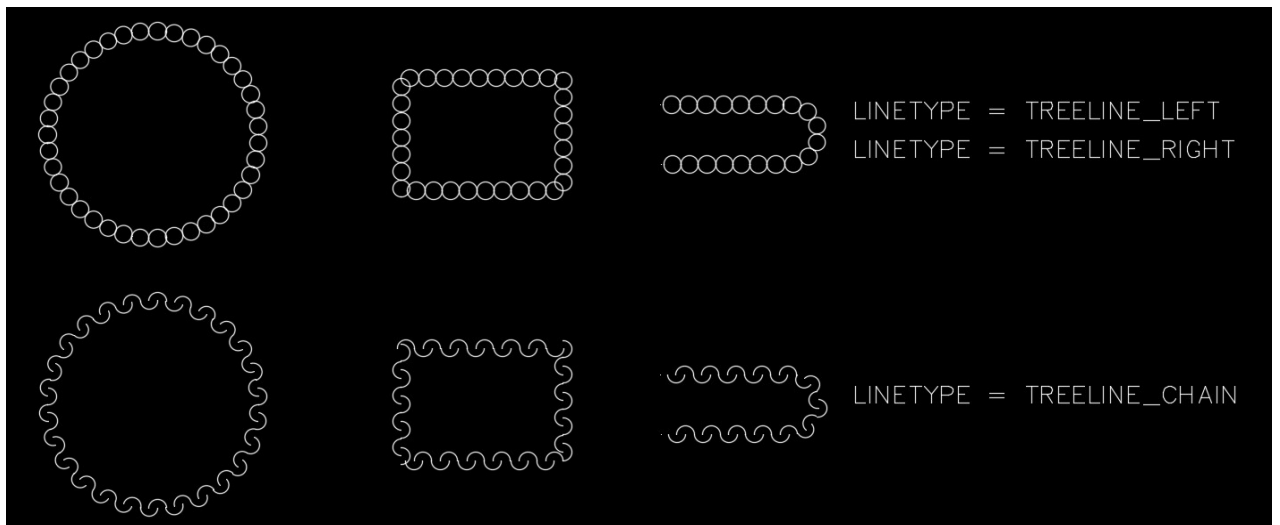
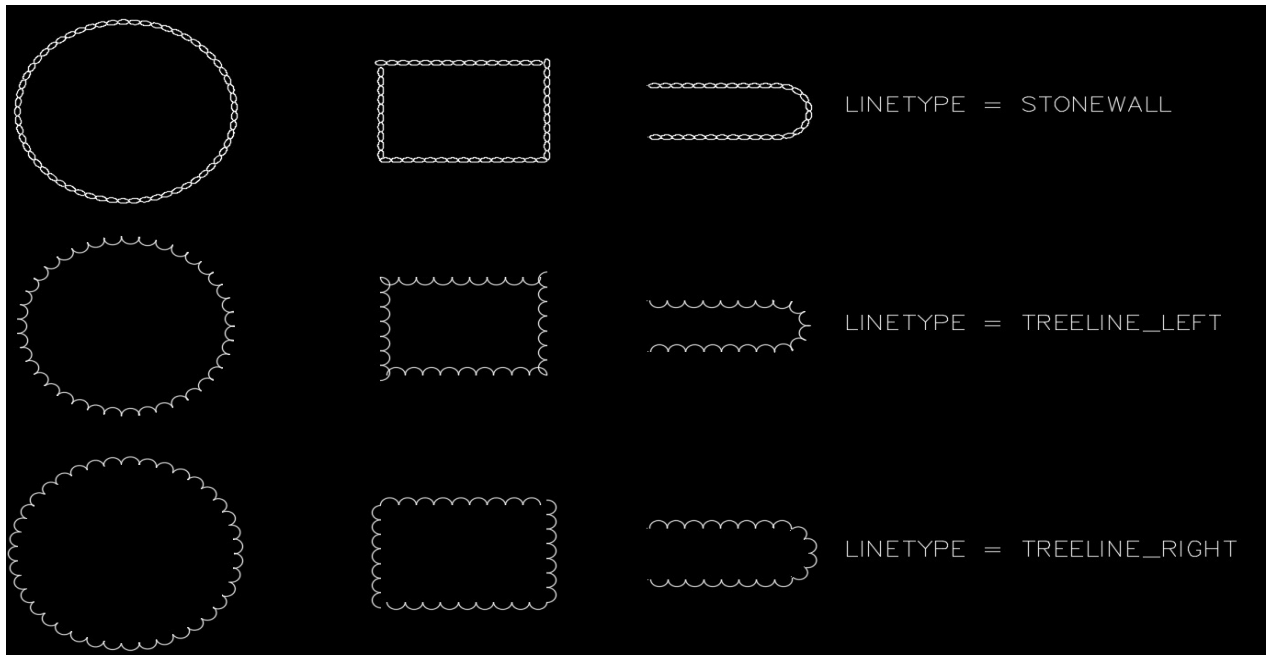
There are linetypes with special characters referenced to shape from the shx files, those shx file path should be available to AutoCAD during that linetype insertion to import that shapes and enabling this option will add the selected group linetype path to AutoCAD support paths.

If the option is not enabled then make sure that the path for the special shape files (shx) is added to AutoCAD support path to avoid error during linetype insertion.





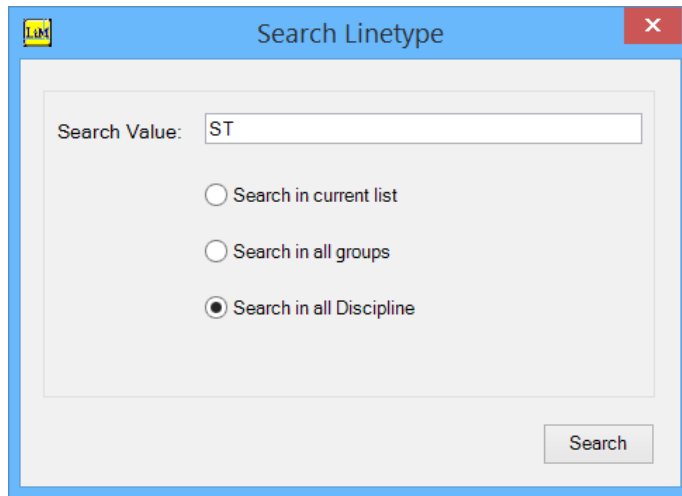
Linetype with special shape:





### Search Linetype:

Search and loads the *matching result* into the linetype list, the search is validated in linetype name and description.



### Search in current list:

This option searches and loads the matching linetype from the current listed linetypes only.

### Search in all groups:

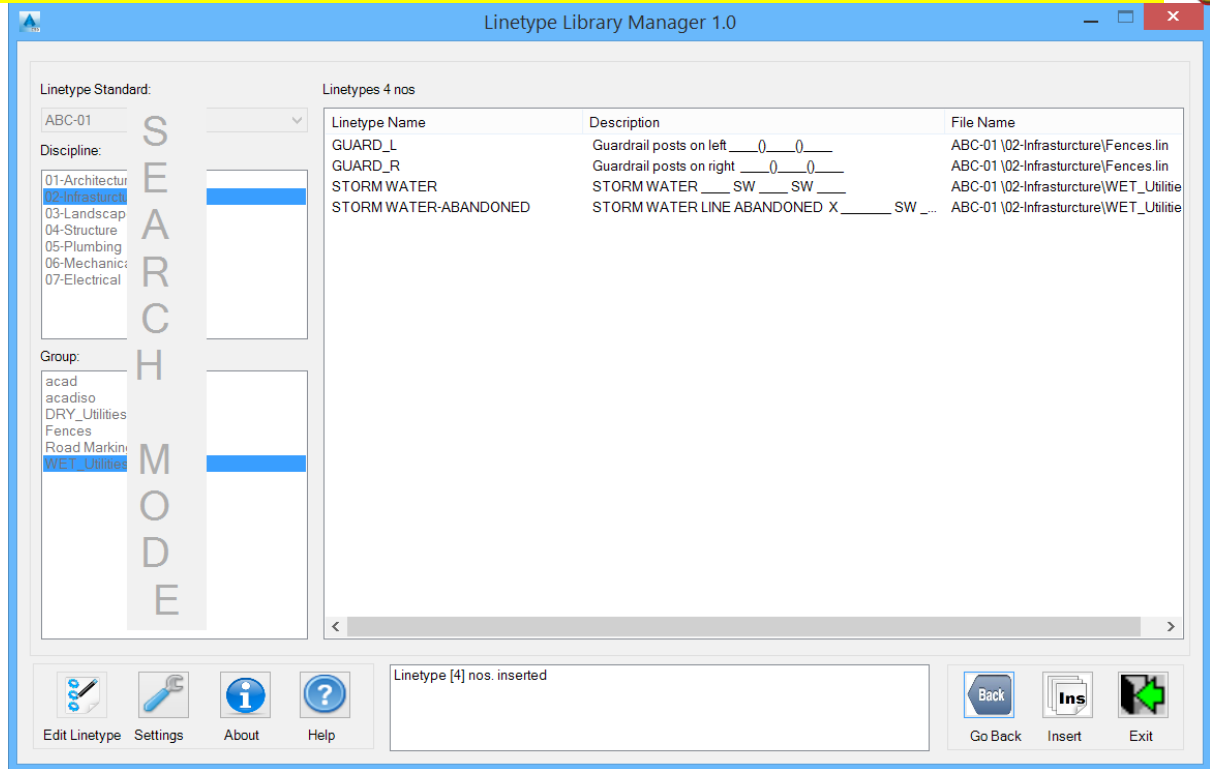
This option searches and loads the matching linetypes from all the linetype files listed in the group folder.

### Search in all Discipline:

This option searches and loads the matching linetypes from all the linetype files available in the discipline folders.







The search result is populated including its file name for easy identification on the file name for editing and the search button is renamed to “Go Back” and the Linetype standard, Discipline list and group list is disabled. Click on the “Go Back” button to return to Main dialog.

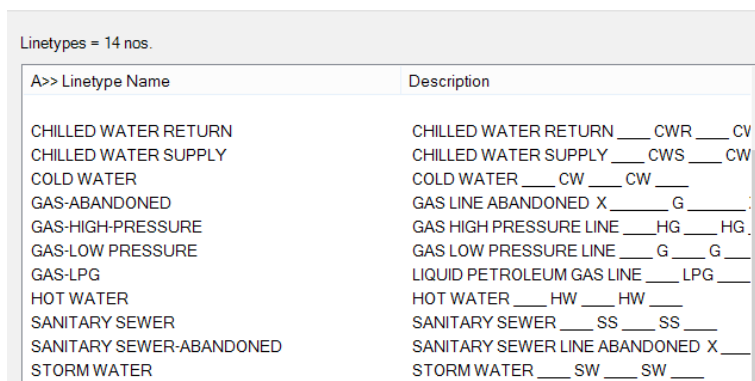
### Sorting:

Click on the linetype list header to sort in Ascending/Descending order

A>> -Indicates shorting in Ascending order

Z>> -Indicates shorting in Descending order

The sorting can be toggled either ascending or descending and to revert it back to default linetype listing, the application should be closed and restarted.



### Right Click Menu:





Right click menu on linetype list view enables easy access to some of its features

Insert Linetype: Inserts selected linetypes

Search Linetype: Opens linetype search dialog

Edit Linetype File:Opens the selected linetype file for editing and reselecting the same file from the group list reloads the updated file.

Edit Settings: Opens setting dialog for editing

Select All Ctrl+A: Selects all linetypes for insertion and use Control + A key combination for quick selection

Linetypes = 11 nos.

Linetype Name	Description
KWT-RM-600	Lane Marking Under 45 km/h(-- -- --)
<b>KWT-RM-601</b>	<b>Lane Marking Over 45 km/h(--- ---)</b>
KWT-RM-601wr	Lane Marking Over 45 km/h PRN (---- □)
KWT-RM-601s	Lane Marking Over 45 km/h SRN (o o o □)
KWT-RM-602	U-Turn Facility Under 45 km/h (----- ----- --)
KWT-RM-603	U-Turn Facility Over 45 km/h (----- -----)
KWT-RM-604	ECW Under 45 km/h (-- -- -- -- -- -- -- --)
KWT-RM-605	ECW Over 45 km/h (----- -----)
KWT-RM-608	Prohibitory Visibility (-- -- -- --)
KWT-RM-610	Guide Lines (-- -- -- --)
KWT-RM-612	Give Way (-----)

