

CADMANAGERTOOLS.COM



# *Layer Library Manager 2.0*

---

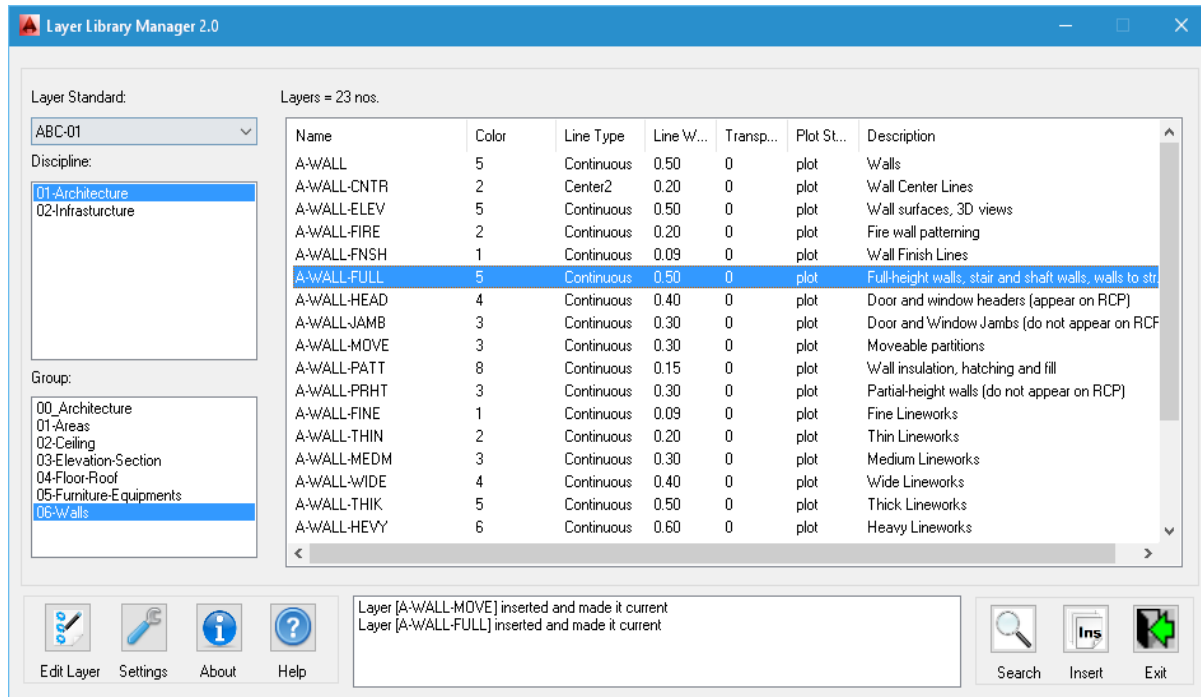
*Tool to manage Layer library for AutoCAD and  
Verticals*

***Compatible with AutoCAD 2013 to 2018***

## Introduction:

The LayerLibraryManager is a powerful, easy to use tool to manage Layer library for AutoCAD. It comes from years of experience in AutoCAD and it is one of the AutoCAD productivity tools developed by CADManagerTools.

It is compatible with 32-bit and 64-bit AutoCAD and Vertical versions from 2013 to 2018.



## Installation:

The installer that ran when you downloaded this plug-in from Autodesk Exchange has already installed the plug-in. You may need to restart AutoCAD to activate the plug-in. The command for command line is "CMT\_LLM".

For the first time set the Layer library location in the settings dialog box and click save to register the path and close the Layer Library Manager and re-launch Layer Library Manager, select the Layer standard from available names in the drop down list and select the discipline folder name and select the layer file available in the group collection that lists all available Layers in the selected file.

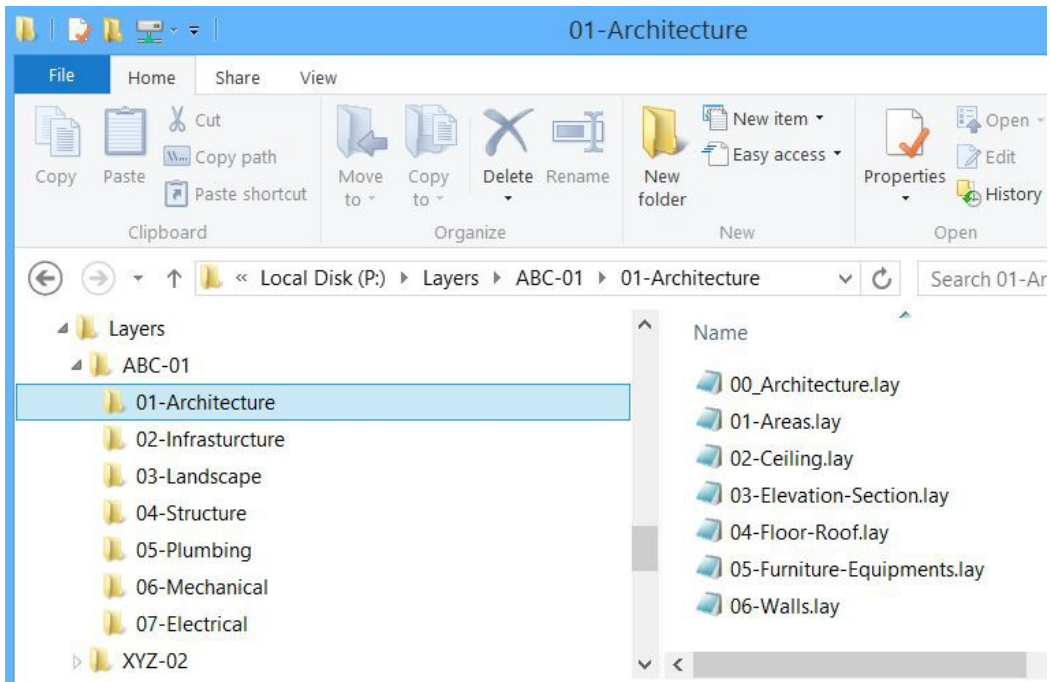
## Setting up Layer library directory structure:

With little effort user can setup the directory structure which suites his/her company wide requirements, the sample is given below to arrange the layer library in folders.

The main layer library manager folder structure should be organized as below image

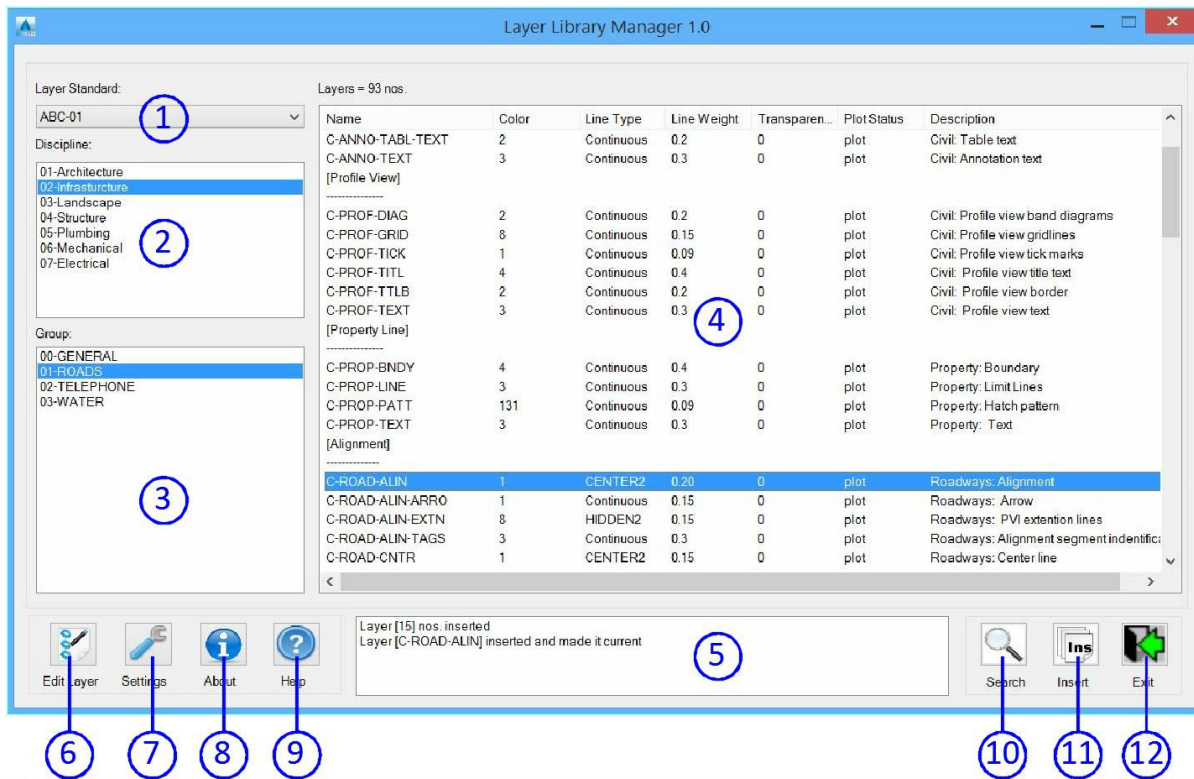
Arrange your layer library based on client specific Layer standards, in most cases the layer names differ from client to client.

Name the Main layer library folder of your choice; for example “LAYERS” or “LAYER LIBRARY” etc...



1. Create Client specific layer standards folders under main folder.
2. Create Discipline wise folders under the client specific layer standards folder.
3. Arrange layer files within each discipline folder.

## User Interface Controls:



Layer Standard : List layer standard list

1. Discipline list : List discipline list
2. Layer group list : List layer group file
3. Layer list : List layer information from the selected layer file
4. Report log : Reports the status of the insert layer operation
5. Edit layer file : Opens the selected layer file for editing in "Notepad" application
6. Settings : Opens settings dialog
7. About : Opens About dialog
8. Help : Opens help file
9. Search : Opens search dialog
10. Insert : Insert selected layers; Single layer can be inserted by double click on the layer name
11. Exit : Exit the application

## Creating layer file:

Create layer file using any text file editor with below format and sub-heading for layer can be added within open and closing square braces

Example: [CIVIL LAYERS]

In addition to the square braces ([]) blank lines, only Hyphens (----), and only Underscore (\_\_\_) are allowed to subdivide the layer list, refer to layer files installed in the installation folder.

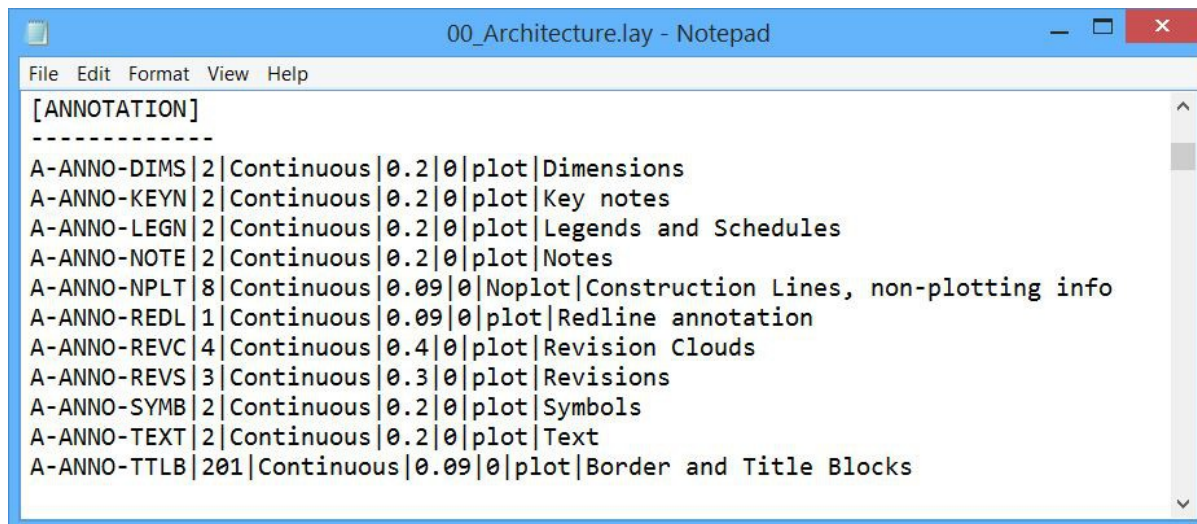
Special double semicolon (;;) is treated as comment and will not be loaded to Layer list

Example: ;; The below layers are newly added for project #####-###

## Layer format:

Layer name | Color | Linetype | Line weight | Transparency | Plot status | Description

Each layer property is separated with pipe symbol (|) and if user prefer to set up with different symbol than the default then it should be modified in settings dialog and layer format.



```
00_Architecture.lay - Notepad
File Edit Format View Help
[ANNOTATION]
-----
A-ANNO-DIMS|2|Continuous|0.2|0|plot|Dimensions
A-ANNO-KEYN|2|Continuous|0.2|0|plot|Key notes
A-ANNO-LEGN|2|Continuous|0.2|0|plot|Legends and Schedules
A-ANNO-NOTE|2|Continuous|0.2|0|plot|Notes
A-ANNO-NPLT|8|Continuous|0.09|0|Noplot|Construction Lines, non-plotting info
A-ANNO-REDL|1|Continuous|0.09|0|plot|Redline annotation
A-ANNO-REVC|4|Continuous|0.4|0|plot|Revision Clouds
A-ANNO-REVS|3|Continuous|0.3|0|plot|Revisions
A-ANNO-SYMB|2|Continuous|0.2|0|plot|Symbols
A-ANNO-TEXT|2|Continuous|0.2|0|plot|Text
A-ANNO-TTLB|201|Continuous|0.09|0|plot|Border and Title Blocks
```

### 1. Layer name:

The sample given is based on AIA layer standard and layer name should not contain any of the below special characters

"<>/\"";:;\*|,="

### 2. Color:

It supports Index color and True color

- a. Index color value range should be between 1 – 255
- b. True color value should be in RGB format and each color code should be separated with comma(,)

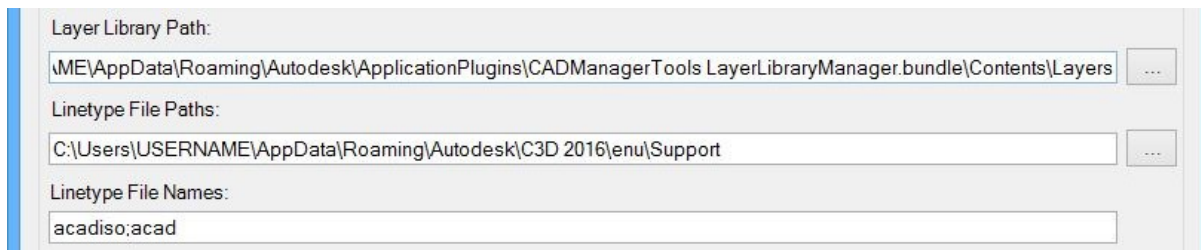
Example: 255,127,0

### 3. Linetype:

The linetype value other than “Continuous” should have the reference to linetype and file name to load it during layer insertion.

By default the linetype path is set to AutoCAD roaming profile support folder and the path will vary based on the AutoCAD version.

For AutoCAD 2014 in Windows 7/8/8.1, the linetype path is set to  
 “C:\Users\USERNAME\AppData\Roaming\Autodesk\AutoCAD 2014\R19.1\enu\Support



In the settings dialog, User can add multiple linetype file paths and file names separating with semi colon (;) for linetypes to be searched and user can set it to different linetype file name/file path than the default one, if he/she is using custom linetype name which is stored in network locations.

Below are the valid format for linetype value

- A. C-ROAD-ALIN|1|CENTER2|0.20|0|plot|Roadways: Alignment

In this format, only linetype is given and no linetype file path is referenced and the following condition will be applied

**Condition #1:** If the specified linetype already exist in the current drawing then the existing linetype is assigned to layer and no search will be done.

**Condition #2:** The linetype name will be searched and loaded from the file names given in the settings “Linetype File Names”

The linetype filename search will stop, if the specified linetype found in the first linetype file name, if not then the search will resume to next available file name.

**Condition #3:** The “Continuous” linetype will be assigned to layer if the specified linetype is not found

- B. C-ROAD-ALIN|1|CENTER2;acadiso|0.20|0|plot|Roadways: Alignment

In this format, linetype “CENTER2” and file name “acadiso” is given and no linetype file path is referenced and the following condition will be applied

**Condition #1:** If the specified linetype already exist in the current drawing then the existing linetype is assigned to layer and no search will be done.

**Condition #2:** The specified linetype will be searched in the specified file names available in the available “Linetype File Paths” and if found then the linetype will be loaded.

The linetype search will not continue to next available file name.

**Condition #3:** The “Continuous” linetype will be assigned to layer if the specified linetype/file name not found.

User can add extra spaces between the linetype names and file name, so as to see only the linetype name in the list but not linetype file name, in this case use only blank spaces (use space bar for gap but not tab key)

C-ROAD-ALIN|1|CENTER2 ;acadiso|0.20|0|plot|Roadways: Alignment

C. C-ROAD-ALIN|1|CENTER2 ;P:\CAD Libray\Linetypes\acadiso|0.20|0|plot|Roadways: Alignment

In this format, linetype name “CENTER2” and file name with path is given and note that there is no file name extension is required

**Condition #1:** If the specified linetype already exist in the current drawing then the existing linetype is assigned to layer and no search will be done.

**Condition #2:** The specified linetype will be searched and then the linetype will be loaded.

The linetype filename search will not continue to next available file paths.

**Condition #3:** The “Continuous” linetype will be assigned to layer if the specified linetype/file name not found

#### 4. Line weight:

The units for lineweight format is in Millimeter (mm) but the corresponding lineweight value in inches is applied to drawing in inches.

In addition to lineweight in mm, the Default value is accepted

The below lineweight format are valid.

C-ROAD-ALIN|1|CENTER2|0.20|0|plot|Roadways: Alignment

C-ROAD-ALIN|1|CENTER2|0.2|0|plot|Roadways: Alignment

C-ROAD-ALIN|1|CENTER2|Default|0|plot|Roadways: Alignment

#### 5. Transparency:

The valid range for transparency is between 0 to 90.

C-ROAD-ALIN|1|CENTER2|Default|0|plot|Roadways: Alignment

C-ROAD-ALIN|1|CENTER2|Default|20|plot|Roadways: Alignment

## 6. Plot Status:

Plot: Layer is set as plottable.

Noplot: Layer is set as Not plottable.

C-ROAD-ALIN|1|CENTER2|Default|0|plot|Roadways: Alignment

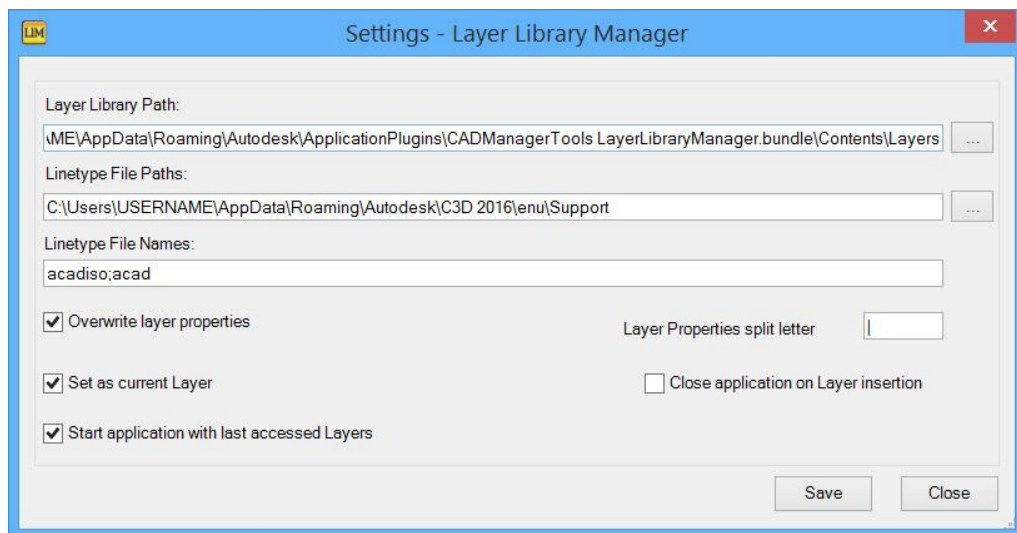
C-ROAD-ALIN|1|CENTER2|Default|0|Noplot|Roadways: Alignment

## 7. Description:

Add layer description and the description should not contain the pipe character (|)

C-ROAD-ALIN|1|CENTER2|Default|0|Noplot|Roadways: Alignment

## Settings:



### Layer Library Path:

Set up the layer library directory structure and assign the layer library manager start up location, this process is the one time set up.

### Linetype File Path:



By default the linetype path is set to AutoCAD roaming profile support folder and the path will vary based on the AutoCAD version.

For AutoCAD 2014 in Windows 7/8/8.1, the linetype path is set to  
“C:\Users\USERNAME\AppData\Roaming\Autodesk\AutoCAD 2014\R19.1\enu\Support

User can add multiple linetype file paths separating each one by semi colon (;) , All the paths added here will be used for linetype search

### **Linetype File Names:**

By default the linetype file names are set to acadiso and acad , separated by semi colon (;) All the file names added here will be used for linetype search.

### **Overwrite Layer Properties:**

Enable this option to force the existing layer properties (color, lineweight, transparency, plot status and description) from the standard layer library.

### **Set As Current:**

Enable this option to set the layer being inserted as current layer and this option will not take effect if more than one layer is selected for insertion.

This will work with double click on the layer to insert and make it as current as well.

### **Start application with last accessed layers:**

Enable this option to start the application with last used layers, if unchecked the application will start with first item selected from the Layer standard, Discipline and group folders.

### **Layer properties split letter:**

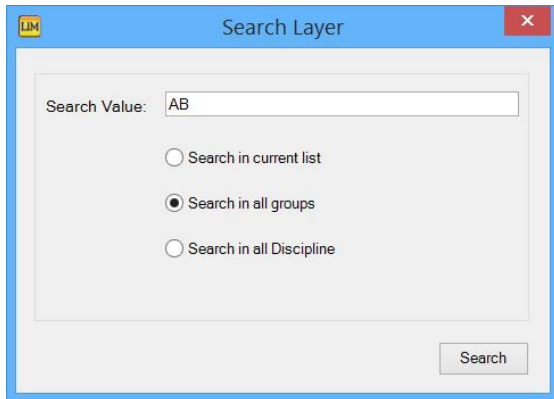
Each layer property is separated with pipe symbol (|) and if user prefer to set up with different symbol than the default then it should be modified in here and layer format.

### **Close application Layer properties split letter:**

Enable this options to close the application on the completion of the layer insertion.

### **Search Layer:**

Search and loads the *matching result* into the layer list, the search is validated in all layer properties.



### Search in current list:

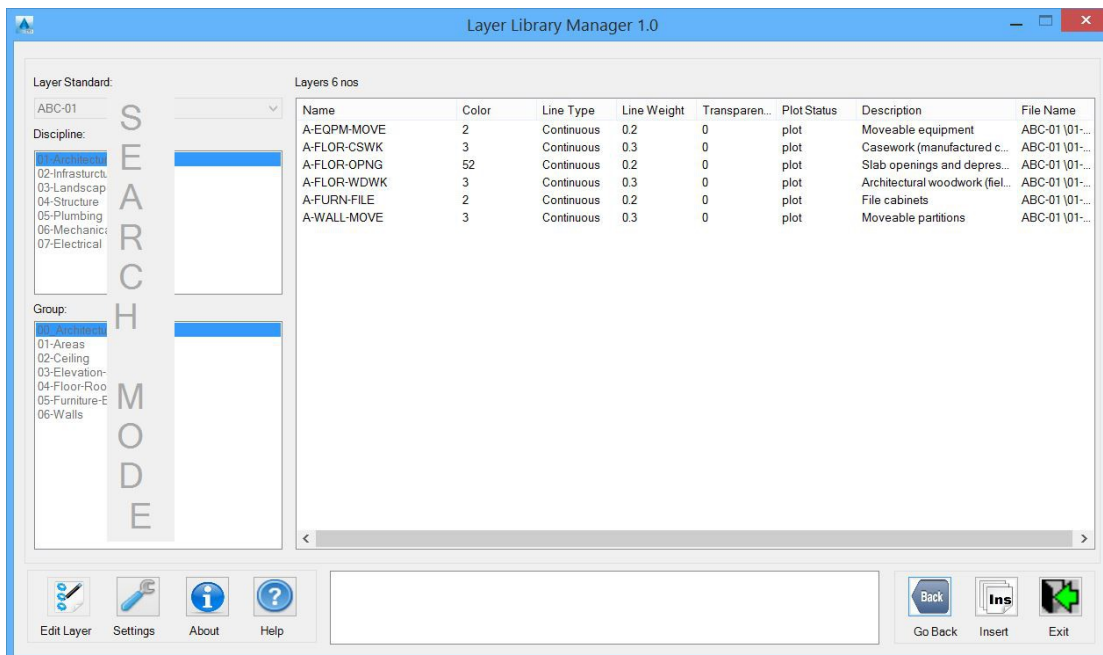
This option searches and loads the matching layer from the current list layers only.

### Search in all groups:

This option searches and loads the matching layers from all the layer files listed in the group folder.

### Search in all Discipline:

This option searches and loads the matching layers from all the layer files available in the discipline folders.



The search result is populated including its file name for easy identification on the file name for editing and the search button is renamed to “Go Back” and the Layer standard, Discipline list and group list is disabled. Click on the “Go Back” button to return to Main dialog.

## Sorting:

Click on the layer list header to sort in Ascending/Descending order

A>> -Indicates sorting in Ascending order

Z>> -Indicates sorting in Descending order

The sorting can be toggled either ascending or descending and to revert it back to default layer listing, the application should be closed and restarted.

Name	A>> Color	Line Type
A-ELEV-MEDM	3	Continuous
A-SECT-IDEN	3	Continuous
A-SECT-MBND	3	Continuous
A-SECT-MEDM	3	Continuous
A-ELEV-MEDM-HIDN	3	Hidden2
A-SECT-MEDM-HIDN	3	Hidden2
A-ELEV-WIDE	4	Continuous
A-SECT-WIDE	4	Continuous
A-ELEV-WIDE-HIDN	4	Hidden2
A-SECT-WIDE-HIDN	4	Hidden2
A-ELEV-OTLN	5	Continuous
A-ELEV-THIK	5	Continuous
A-SECT	5	Continuous
A-SECT-THIK	5	Continuous

## Right Click Menu:

Right click menu on layer list view enables easy access to some of its features

Insert Layer: Inserts selected layers

Search Layer: Opens layer search dialog

Edit Layer File: Opens the selected layer file for editing and reselecting the same file from the group list reloads the updated file.

Edit Settings: Opens setting dialog for editing

Select All Ctrl+A: Selects all layers for insertion and use Control + A key combination for quick selection

Color	Line Weight	Transparen...	Plot Status	Descri
Blue	0.30	0	plot	Mediu
Blue	0.30	0	plot	Comp
Blue	0.30	0	plot	Materi
Blue	0.30	0	plot	All Me
Blue	0.30	0	plot	Mediu
Blue	0.30	0	plot	Mediu
Blue	0.40	0	plot	Wide l
Blue	0.40	0	plot	All Wic
Blue	0.40	0	plot	Wide l
Blue	0.40	0	plot	Wide l
Blue	0.50	0	plot	Buildir
Blue	0.50	0	plot	Thick l

