

CADMANAGERTOOLS.COM



# *Dxf2Dwg 3.0*

---

*Batch process tool to convert Dxf to Dwg*

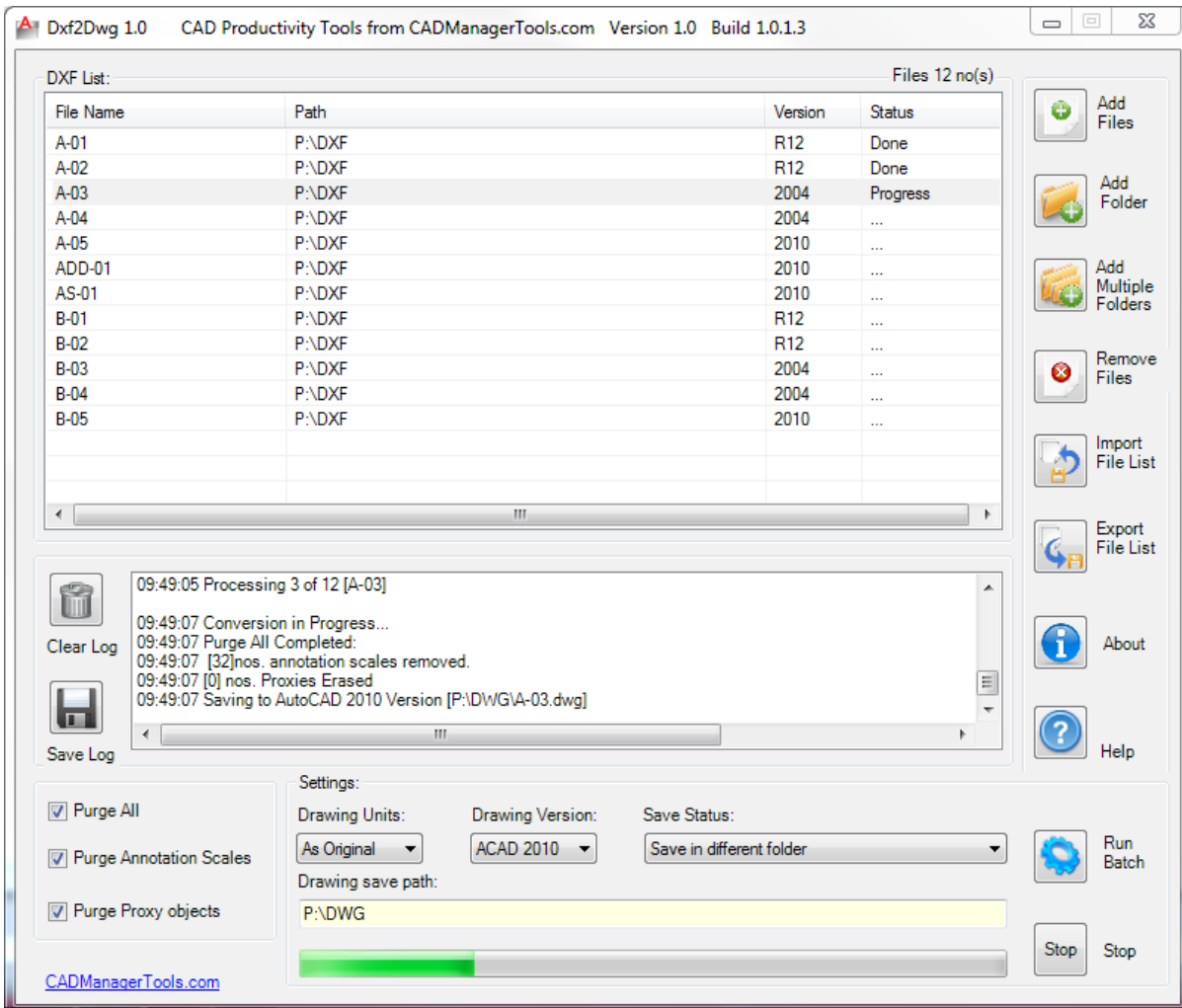
*Compatible with AutoCAD 2013 to 2018*



## Introduction:

The Dxf2Dwg is a powerful, easy to use batch process tool for AutoCAD. It comes from years of experience in AutoCAD and it is one of the AutoCAD productivity tools developed by CADManagerTools.com.

It lets you effortlessly convert multiple Dxf files into Dwg files without opening them and it is compatible with 32-bit and 64-bit AutoCAD and vertical versions from 2013 to 2018.



## Installation:

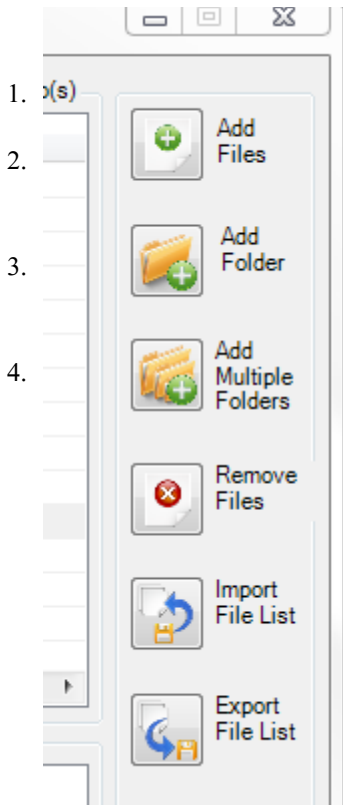
The installer that ran when you downloaded this plug-in from Autodesk Exchange has already installed the plug-in. You may need to restart AutoCAD to activate the plug-in.

The command for command line is "CMT\_DXF2DWG"



## Interface Commands:

There are four methods available to add dxf files into batch process.



**Add File(s) -> Files:** opens standard file selection dialog box.

**Add File(s) -> Folder:** opens standard folder browser dialog box. All dxf files from selected folder will be added to dxf list.

**Add File(s) -> Folder & Subfolders:** opens standard folder browser dialog box. All dxf files from selected folder and its subfolders will be added to dxf list.

**Drag & Drop ->** Drag and drop dxf files from windows explorer.

- **Remove File(s):** Removes selected files from list.
- **Import file list:** Import dxf list from exported dxf list. Dxf validity will be checked while importing. If any dxf in the list does not exist in the specified location or renamed then warning message will pops-up with missing dxf name.
- **Export file list:** Export dxf list to user specified location for future batch use

### Right Click Menu [Dxf List]:

- **Reset File Status:** The batch process will process only files which are in default status (“...”), the default status of the file being processed will be changed during batch process, the succeeded files will be marked as “Done” and Failed will be marked as “Failed”. To rerun the processed file, the reset status command will reset the status of selected files to default status.
- **Clear file list:** Clears file list.



**File sorting and moving:**

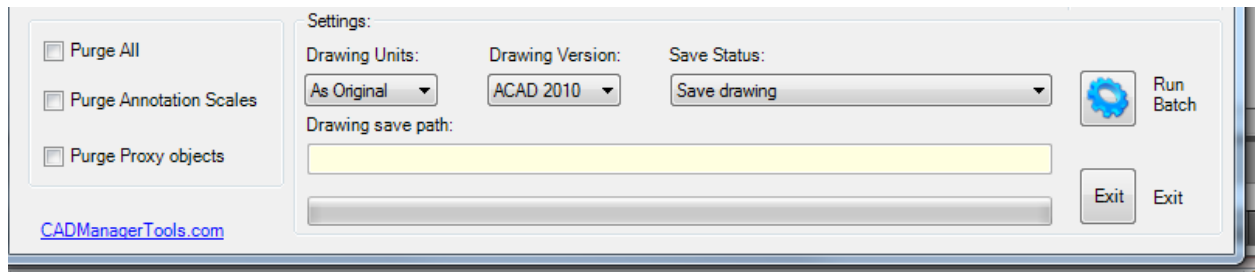
Drawing List:	
A>> File Name	Path
A-01	P:\12
A-02	P:\12
A-03	P:\12
A-04	P:\12
A-05	P:\12
AS-01	P:\12
PB-BASE	P:\12
PB-EX41	P:\12
PB-EX61	P:\12
PB-TITLE	P:\12
S-01	P:\12
S-02	P:\12
S-03	P:\12
S-04	P:\12
T-01	P:\12

Drawing List:	
Z<< File Name	Path
T-01	P:\12
S-04	P:\12
S-03	P:\12
S-02	P:\12
S-01	P:\12
PB-TITLE	P:\12
PB-EX61	P:\12
PB-EX41	P:\12
PB-BASE	P:\12
AS-01	P:\12
A-05	P:\12
A-04	P:\12
A-03	P:\12
A-02	P:\12
A-01	P:\12

- Sort order - click on the dxf list view headers to sort - Ascending /Descending.
- Version –Shows current dxf version.



Dxf file version could be quickly checked by adding files to dxf list.



Additional options (Purge All, Purge Annotation Scales and Purge Proxy objects) are available to clean up the drawings during conversion.

1. **Drawing version:** Set drawing save version

There are four options available

- a. ACAD 2013
- b. ACAD 2010
- c. ACAD 2007
- d. ACAD 2004





e. ACAD 2000

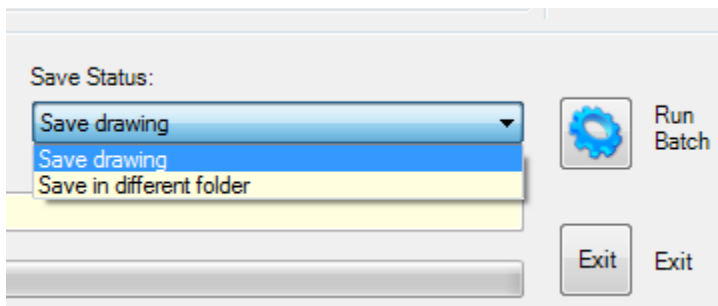
2. **Drawing Units:** Set drawing units

There are seven options available

- a. As Original– No conversion on drawing units will be made
- b. Unitless
- c. Inches
- d. Feet
- e. Millimeters
- f. Centimeters
- g. Meters

3. **Drawing Save Status:** Set save options

There are two options available



- Save drawing: Saves drawing with selected drawing version and selected drawing units
- Save in different folder: Saves drawing to the specified location with selected drawing version and selected drawing units
- To run the dxf to dwg conversion, click the Run batch button.
- Batch process can be stopped at any time by clicking on the stop button, during the batch process, the Exit button will read as “Stop”.

