



CADMANAGERTOOLS.COM

Detail Manager 3.1

*Tool to manage Detail Library for AutoCAD and
Verticals*

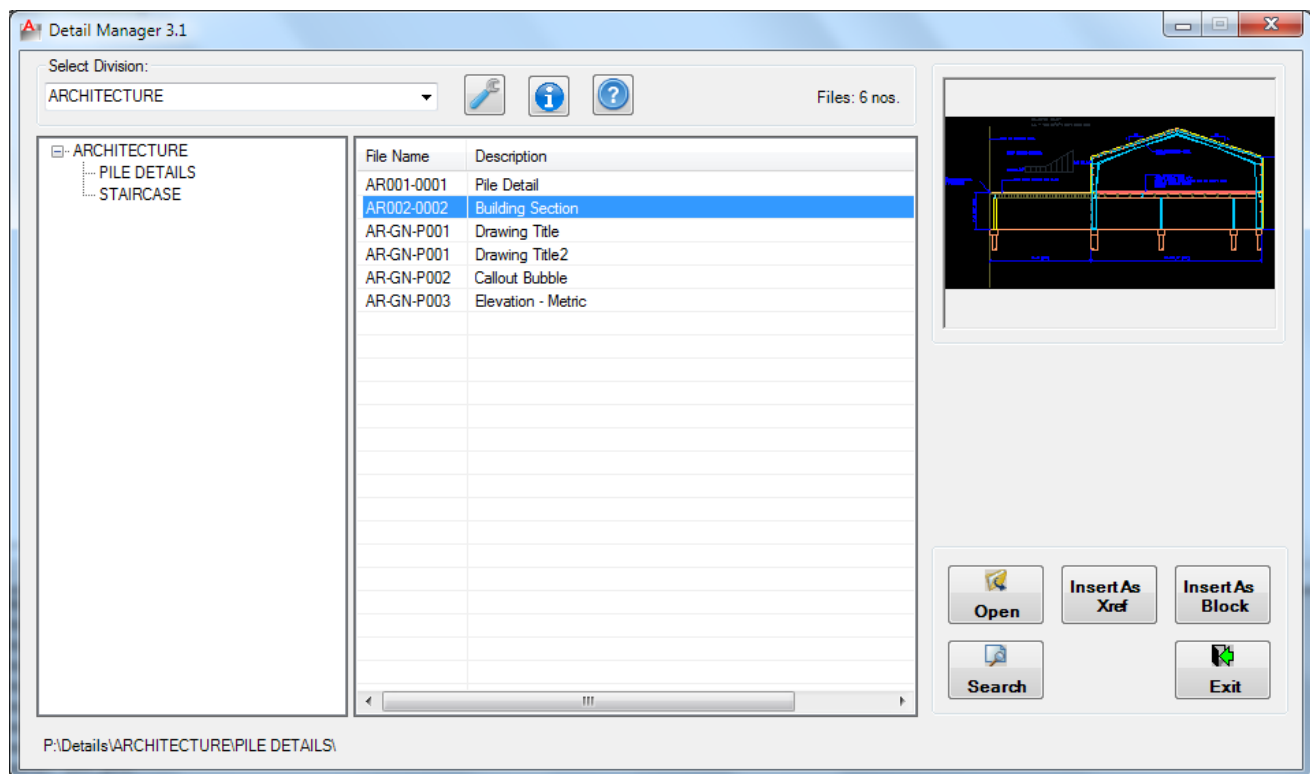
Compatible with AutoCAD 2012 to 2017



Introduction:

The DetailManager is a powerful, easy to use tool to manage Detail library for AutoCAD. It comes from years of experience in AutoCAD and it is one of the AutoCAD productivity tools developed by CADManagerTools.com.

It is compatible with 32-bit and 64-bit AutoCAD and Vertical versions from 2012 to 2017.



Installation:

The installer that ran when you downloaded this plug-in from Autodesk Exchange has already installed the plug-in. You may need to restart AutoCAD to activate the plug-in. The command for command line is "CMT_DTM".

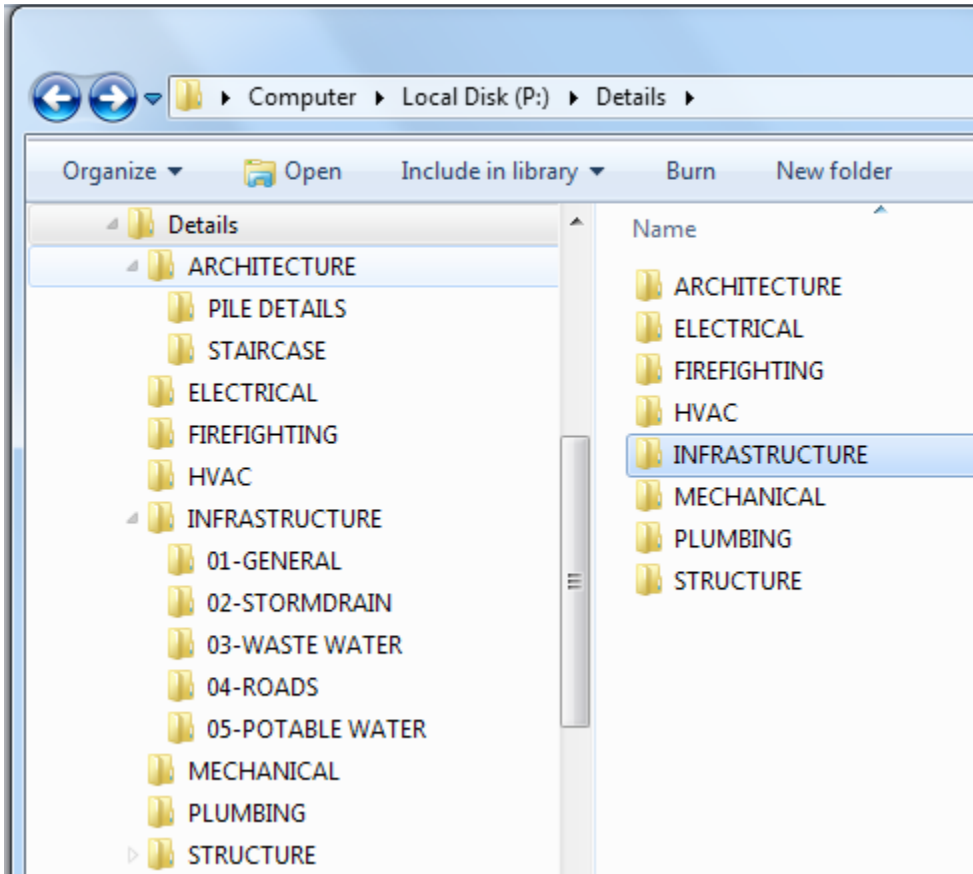
For the first time set the Detail location in the settings dialog box and click save to register the path and close the DetailManager and re-launch DetailManager, select the Division from available names in the drop down list and select the listed folder name that will list all available drawings in the selected folder.





Creating Directory structure

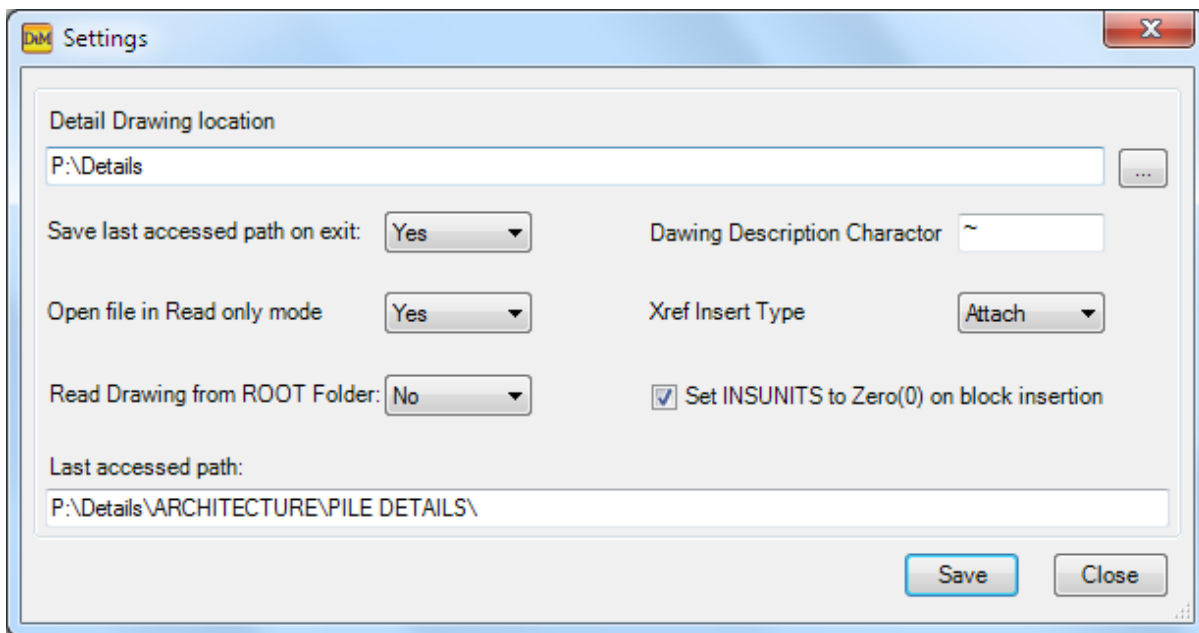
Create your directory structure, the sample is given below, and copy the discipline specific drawing files in the folders.





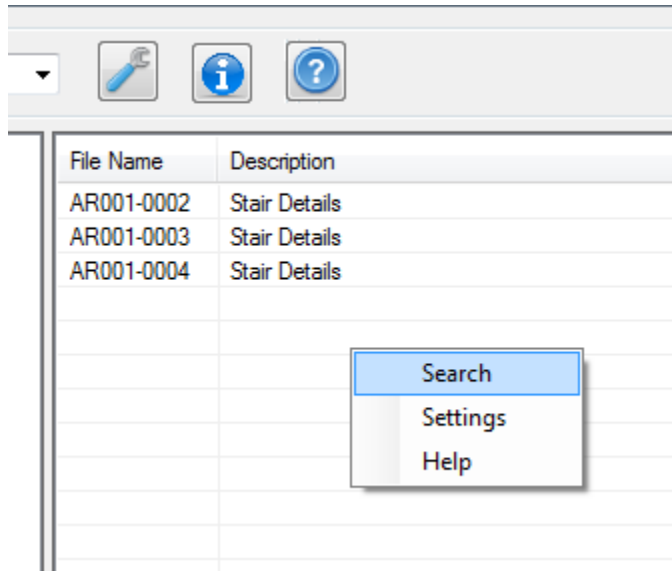
Settings:

1. Set the Detail drawing location by clicking on browse button
2. The last accessed path will be saved and the next run makes the path as current, if option is set to “Yes” for option “Save last access path on exit”
3. Drawing will be opened as read-only, if option is set to “Yes” for option “Open file in Read only mode”
4. By default the “Drawing Description Character” is set to symbol Tilde(~), this is the character to separate the Drawing number and Description
5. Option to read drawings from the ROOT folder (Division)
6. By Default Xref insert type is set to “Attach” and user can set it to “Overlay”
7. Enabling system variable INSUNITS to Zero during Xref/Block insertion will avoid the auto-scaling of objects being inserted from Detail Manager
8. Save – The changes are made here will be saved otherwise the changes will be discarded.
9. Close – close the settings Dialog box.



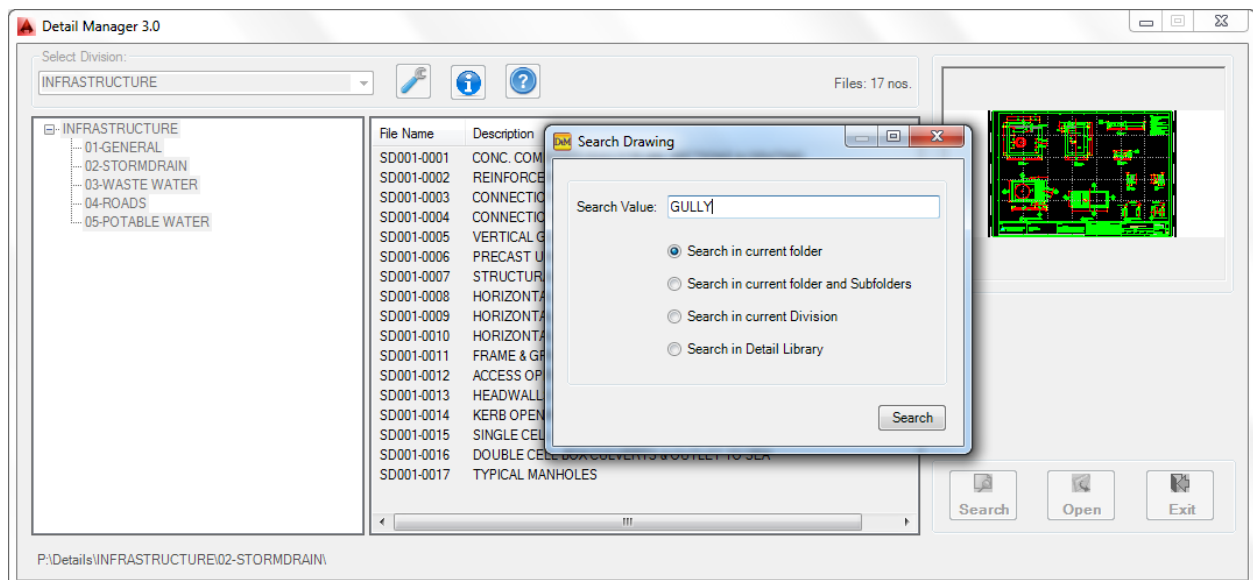
Right click menu:

Right click menu on File list view enables easy access to some of the features



Search Details

Search the details with full or partial word, the search is done in the whole file name



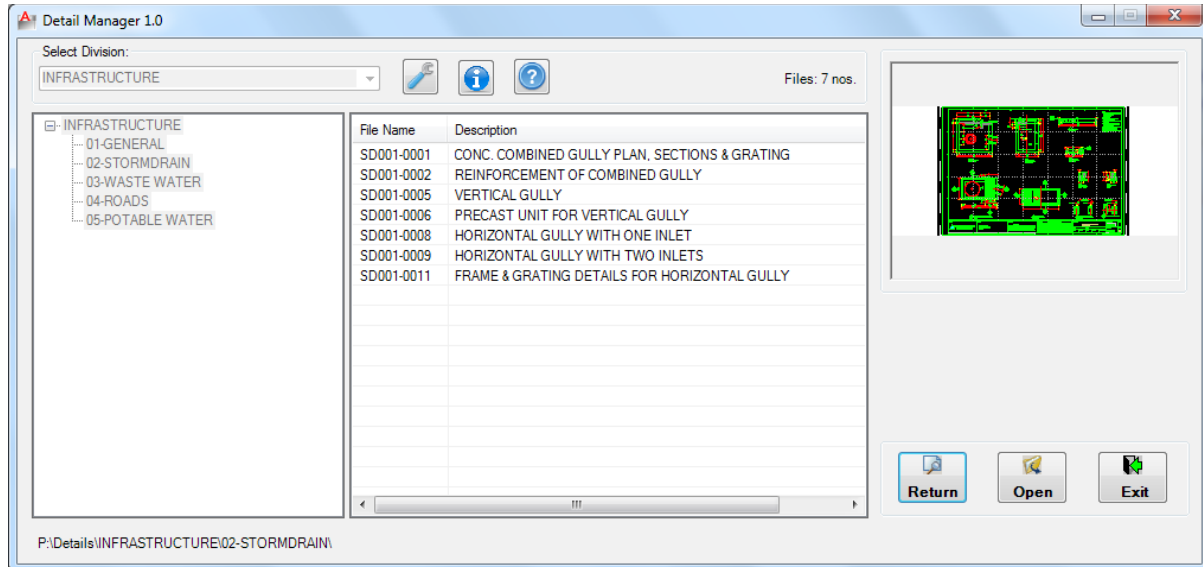
There are four options for search criteria

1. Search in current folder – Searches drawings in the current selected folder only, current folder is visible on the lower left corner of the Detail Manager application



2. Search in current folder and subfolders – Searches drawings in the current selected folder and its sub-folders
3. Search in current Division – Searches drawings in the current Division folder and its sub-folders
4. Search in Detail Library – Searches drawings in the whole Detail library

The search result will be displayed in a separate list and click on Return to return to main page



Opening File:

Select a file and click “Open” to open the drawing in AutoCAD or double click the file to open from the list.

