

CADMANAGERTOOLS.COM



DimStyle Library Manager 2.0

Tool to manage Dimension style library for
AutoCAD and Verticals

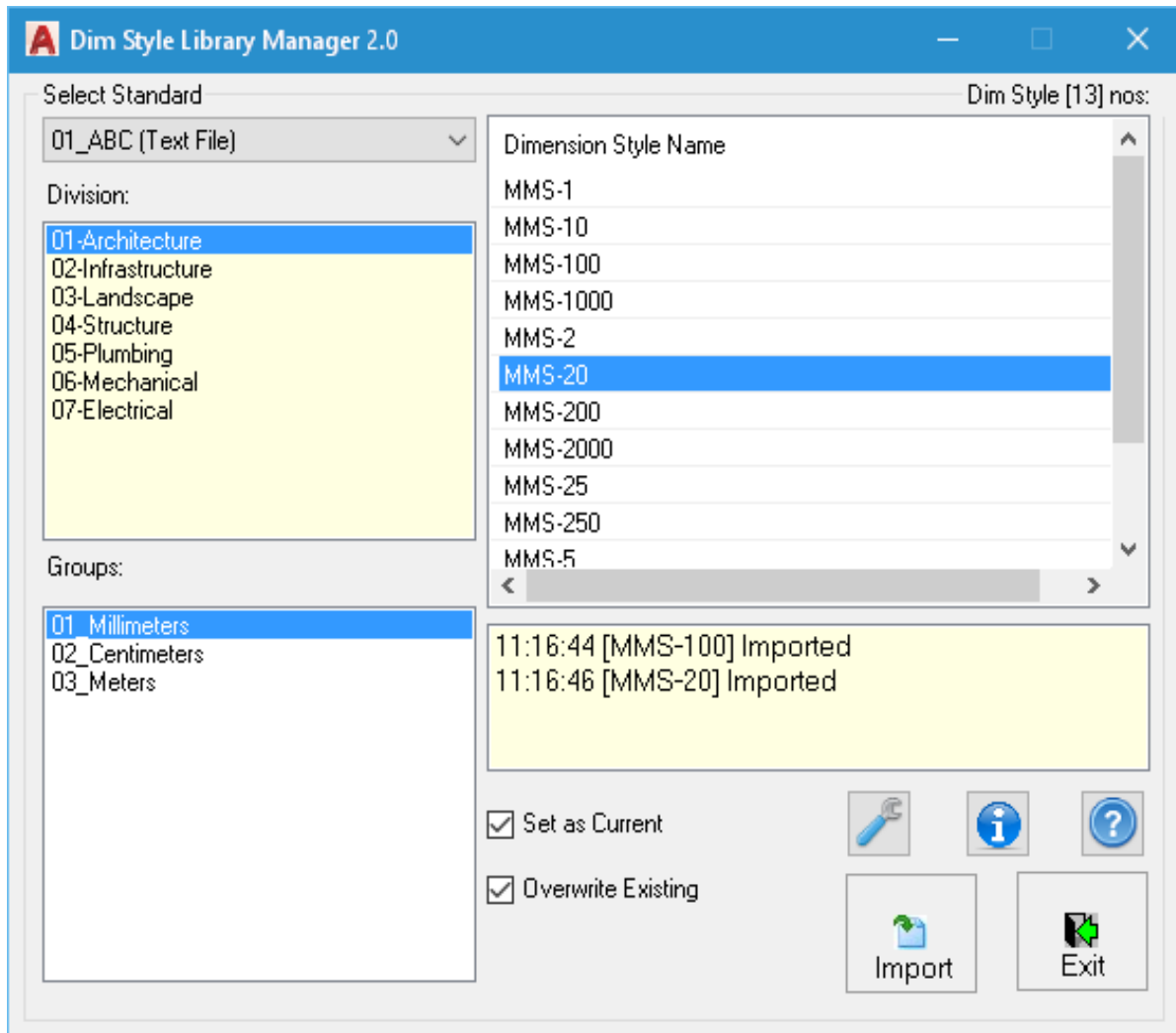
Compatible with AutoCAD 2013 to 2018



Introduction:

The DimStyle Library Manager is a powerful, easy to use tool to manage Dimension style library for AutoCAD. It comes from years of experience in AutoCAD and it is one of the AutoCAD management tools developed by CADManagerTools.

It is compatible with 32-bit and 64-bit AutoCAD and Vertical versions from 2013 to 2018.



Installation:

The installer that ran when you downloaded this plug-in from Autodesk Exchange has already installed the plug-in. You may need to restart AutoCAD to activate the plug-in. The command for command line is “CMT_DSM”.

For the first time set the Dimension style library location in the settings dialog box and click save to register the path and close the DimStyle Library Manager and re-launch DimStyle Library Manager, select the Dimension style standard from available names in the drop down list and select the division folder name and select the Dim style file available in the group collection that lists all available Dimension styles in the selected file.





Setting up Dimension styles library directory structure:

With little effort user can setup the directory structure which suites his/her company wide requirements, the sample is given below to arrange the Dimension styles library in folders.

The main Dimension styles library folder structure should be organized as below image

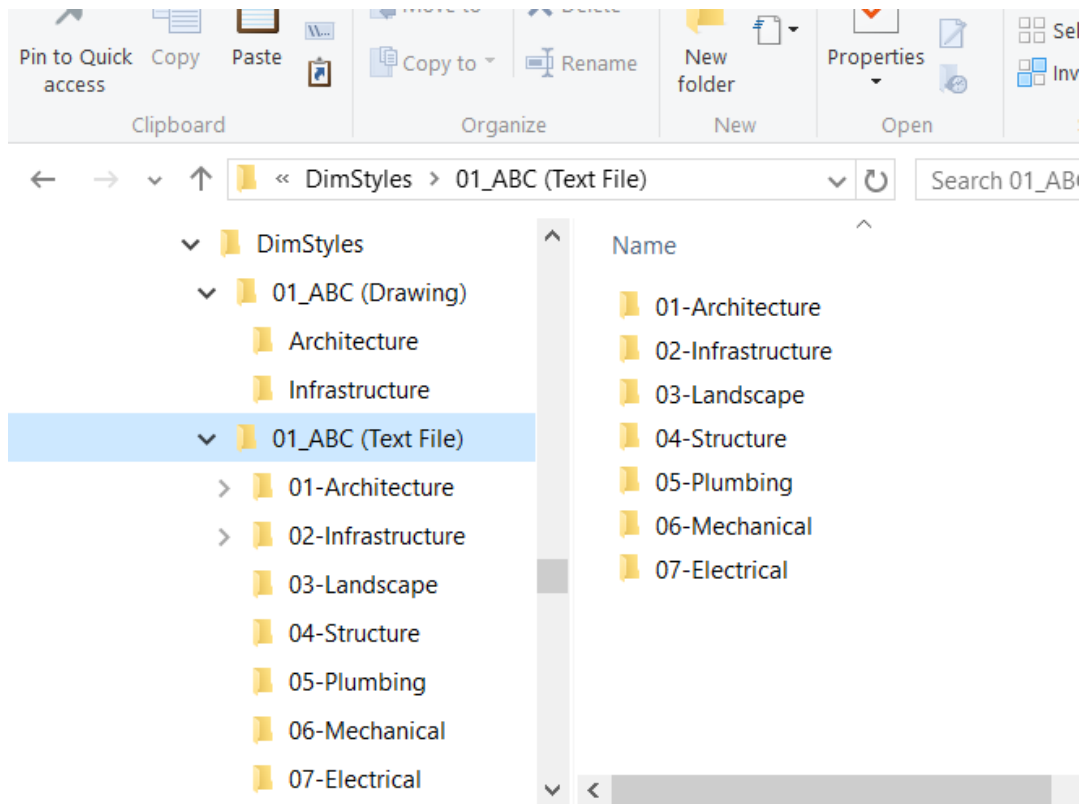
Create your Dimension styles library based on client specific standards, in most cases the Dimension style name/ values differs from client to client.

Name the Main Dimension styles library folder of your choice; for example “DIMSTYLES” or “DIM STYLES LIBRARY” etc....

1. Create Client specific Dimension style library folders under main folder.
2. Create Discipline/Division wise folders under the client specific Dimension style standards folder.
3. Arrange Dimension style files within each Discipline/Division folder.

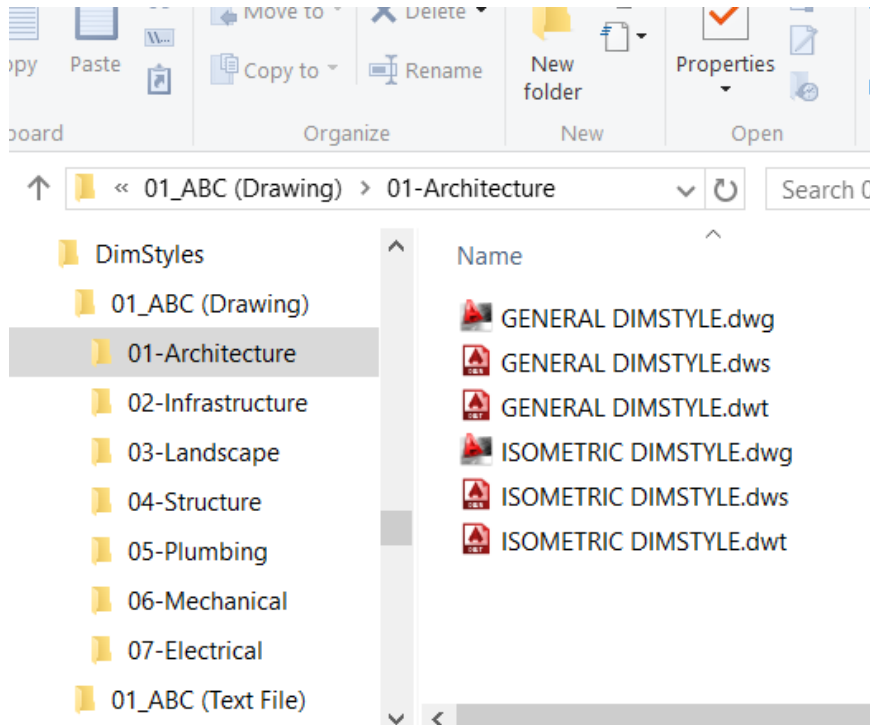
There are two options available for Dimension style file types

A. Text File – This option use the regular text file and user can use window’s “Notepad” application or similar text editing tool to create such files, each Dimension style is created in an individual file which is imported into AutoCAD to create Dimension style. This option would be handy if the CAD Manager prefer to control the dimension style through dimension system variables.





B. Drawing File – User can create and setup the Dimension style in AutoCAD Dimension style manager and save the file in DWG/DWT/DWS format.



User should arrange the type of selected Dimension style files under the group folder, this option is available in the settings dialog box and refer to Installation folder for the sample files and folder arrangement which is shown below.

C:\Users\USERNAME\AppData\Roaming\Autodesk\ApplicationPlugins\CADManagerTools
DimStyleLibraryManager.bundle\Contents\DimStyles

Set as Current:

This option is default and if enabled sets the imported dimension style as current

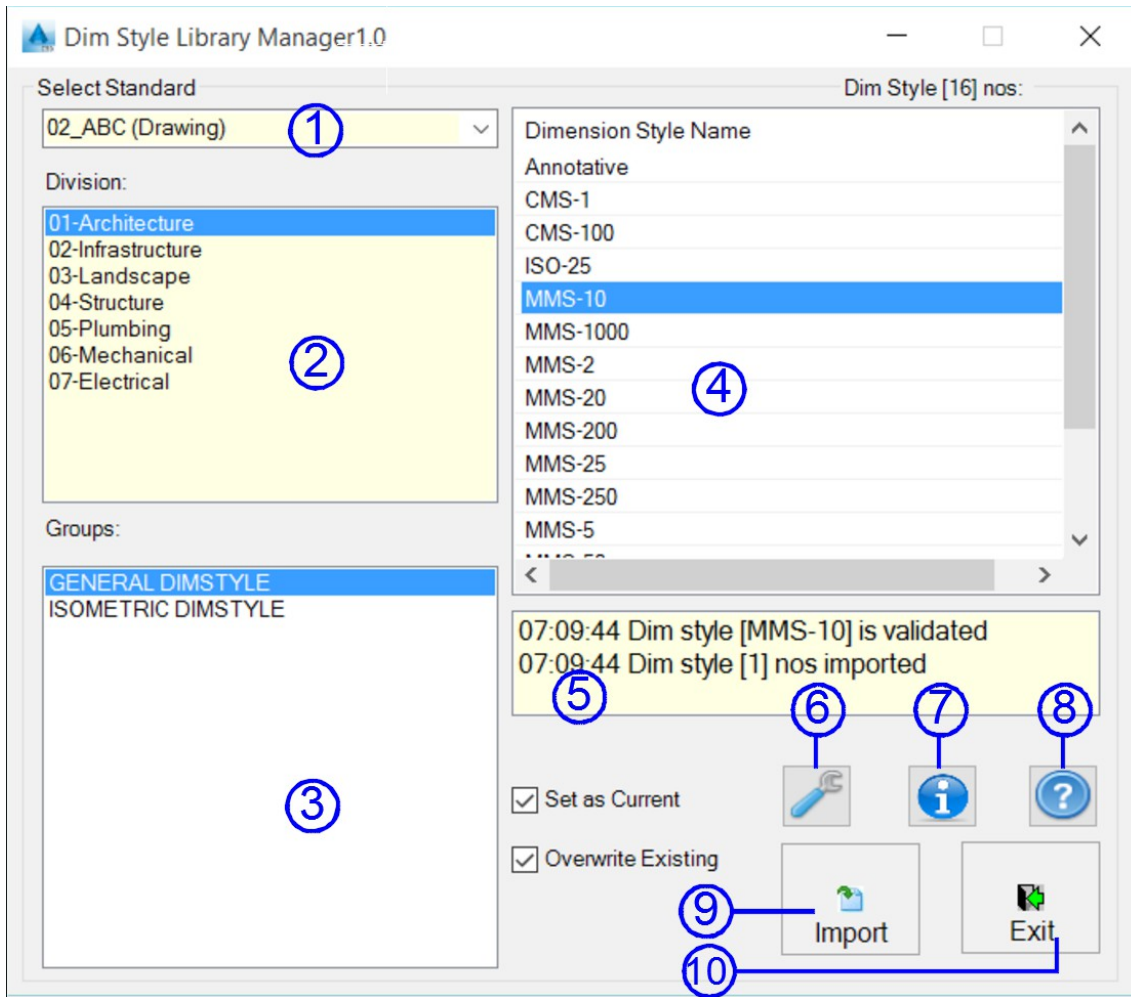
Overwrite Existing:

This option is default and if enabled overwrites the existing dimension style settings, For example Text style, font name etc..





User Interface Controls:



1. Dim style Standard : Lists Dim style standard list
2. Division list : Lists divisional list
3. Group list : Lists Dim style group file
4. Dim style list : Lists Dim style names from the selected group file
5. Report log : Reports the status of Dim style import operation
6. Settings : Opens settings dialog
7. About : Opens About dialog
8. Help : Opens help file
9. Import : Import selected Dim style and user can double click on an item to import it
10. Exit : Exit the application





Creating Dim style Text file:

```
MMS-10.txt - Notepad
File Edit Format View Help
DIMADec=2
DIMALT=0
DIMALTD=2
DIMALTF=25.40
DIMALTRND=0.00
DIMALTTD=2
DIMALTTZ=0
DIMALTU=2
DIMALTZ=0
DIMAPOST="."
DIMASZ=1.00
DIMATFIT=3
DIMAUNIT=0
DIMAZIN=2
DIMBLK="_dot"
DIMBLK1="."
DIMBLK2="."
DIMCEN=2.00
DIMCLRd=8
DIMCLRE=8
DIMCLRT=2
DIMDEC=0
DIMDLE=0.00
DIMDLI=5.00
DIMDSEP="."
DIMEXE=1.50
DIMEXO=1.50
DIMFRAC=0
DIMGAP=0.80
DIMJUST=0
DIMLDRBLK="Open90"
DIMLFAC=10
DIMLIM=0

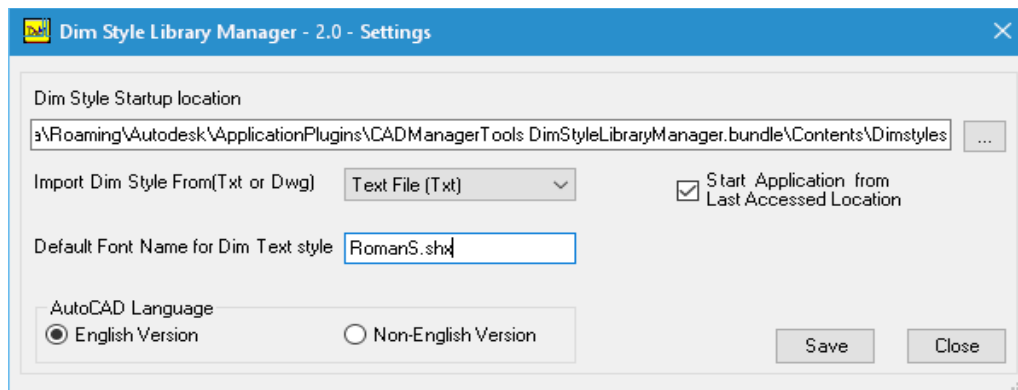
MMS-10.txt - Notepad
File Edit Format View Help
DIMLFAC=10
DIMLIM=0
DIMLUNIT=2
DIMLWD=-2
DIMLWE=-2
DIMPOST="."
DIMRND=0.00
DIMSAH=0
DIMSCALE=1.00
DIMSD1=0
DIMSD2=0
DIMSE1=0
DIMSE2=0
DIMSOXD=0
DIMITAD=1
DIMITDEC=0
DIMITFAC=1.00
DIMITIH=0
DIMITIX=1
DIMITM=0.00
DIMITMOVE=2
DIMITOFL=1
DIMITOH=0
DIMITOL=0
DIMITOLJ=1
DIMITP=0.00
DIMITSZ=0.00
DIMITVP=0.00
DIMITXSTY="Dims"
DIMITXT=2
DIMITZIN=8
DIMUPT=0
DIMZIN=8
```

There is no special formatting is required; User can simply follow the AutoCAD system variables as shown on the above sample file





Settings:



Dim style startup location:

Set up the Dim style library directory structure and set the Dim style library start up location, this process is the one time set up.

Import Dim Style From(Txt or Dwg):

Set the type of Dim style file of your

1. Text File – This option use the regular text file and user can use window’s “Notepad” application to create such files, each Dimension style is created in an individual file which will be imported into AutoCAD to create Dimension style. This option would be handy if the CAD Manager prefer to control the dimension style through dimension variables.
2. Drawing File (Dwg)– User can create and setup the Dimension style in AutoCAD Dimension style manager and save the file in Dwg format.
3. Template File (Dwt)– User can create and setup the Dimension style in AutoCAD Dimension style manager and save the file in Dwt template format.
4. Style File (Dws)– User can create and setup the Dimension style in AutoCAD Dimension style manager and save the file in Dws Style format.

Default Font Name for Dim Text style:

By default the import Dim style from text file option creates font style name “Dims” from the reference variable (DIMTXSTY=“Dims”) and the font style name to be referenced to font name which is set to “romans.shx” and user can set to any other valid font name

Start application from last accessed location:

Enable this option to start the application from last used Dim style group, if unchecked the application will start with first item selected from the Dim style standard, Division and group folders.





AutoCAD Language:

The default option is set to “English version” and user should set the appropriate option based on the AutoCAD language installed.

